



Quick Installation Guide

X1-AC Series 3.0KW-5.0KW

II

Inverter Installation

- 1 - Mark the position of three holes
- 2 - Drill holes with $\Phi 10$ drill.
- Depth: at least 50mm.
- 3 - Tighten the expansion tubes.
- 4 - Screw the expansion screws.
(torque: $2.5 \pm 0.2 \text{ Nm}$)
- 5 - Match the inverter with the bracket.
- Screw the cross recessed screw on the right side. (torque: $1.5 \pm 0.2 \text{ Nm}$)

I

Packing List

X1 Series X1	Bracket X1	Male DC connector X1 Female DC connector X1 AC connector X1	Screw package: Expansion tube X3 Expansion screw X3
Earth terminal X1 Set screw X1	Waterproof connector with RJ45 X4	User manual X1	Quick installation guide X1
Warranty card X1	Current Sensor/CT X1 (Optional)	Pocket WiFi X1 (Optional)	Meter X1 (Optional)

Note:
Please refer to the appropriate instruction manual for the usage of optional accessories.

III

Serial Port Connections

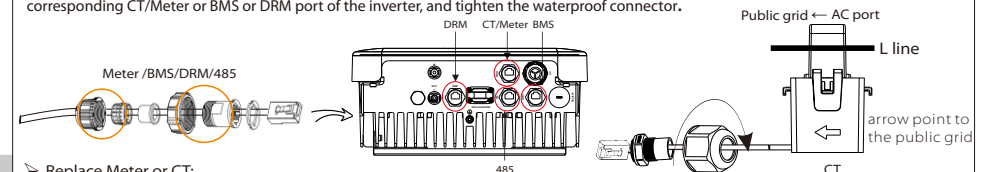
Ports Definition.

Communication interface between the inverter and Meter/Battery/DRM/485 are as follows with RJ45 connectors which should be inserted corresponding port in the inverter.



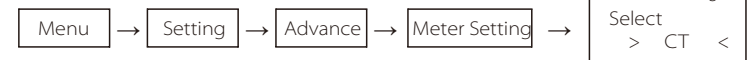
Port	PIN	1	2	3	4	5	6	7	8
CT		CT+	X	X	CT-	X	X	X	X
Meter		X	X	X	X	X	GND	485A	485B
BMS		NTC	GND	GND	BMS_CANH	BMS_CANH	GND	BMS_485A	BMS_485B
DRM		DRM1/5	DRM2/6	DRM3/7	DRM4/8	+3.3V	DRM0	GND	GND
485		X	Shut Down	GND	485A	485B	X	X	X

* Prepare RJ45 connector and the communication cable, following the PIN definition and assembly order below, then insert the cable into the corresponding CT/Meter or BMS or DRM port of the inverter, and tighten the waterproof connector.



Replace Meter or CT:

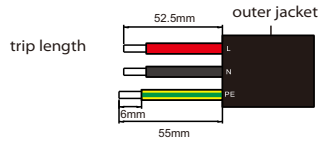
* If the customer's usage is inconsistent with the factory Settings, it can be modified through the following.



IV

AC and Earth Connection

Cable size: 10 AWG(5~6mm²)



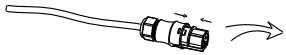
1. Slide the cable nut and back shell onto the cable.



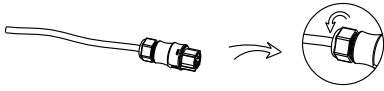
2. Insert the stripped end of three wires into holes in the female insert, then tighten (torque: $0.8 \pm 0.1 \text{ Nm}$) each screw.



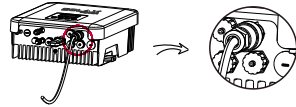
3. Screw down the threaded sleeve with pressure screw.



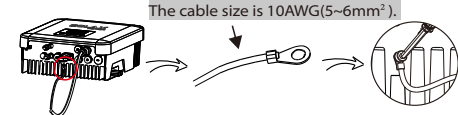
4. Screw down the pressure screw. (torque: $3 \pm 0.3 \text{ Nm}$)



5. Connect the AC plug to the inverter.



6. Screw the ground screw (on the inverter) with $\Phi 4$ hexagon wrench (torque: $1.5 \pm 0.2 \text{ Nm}$)



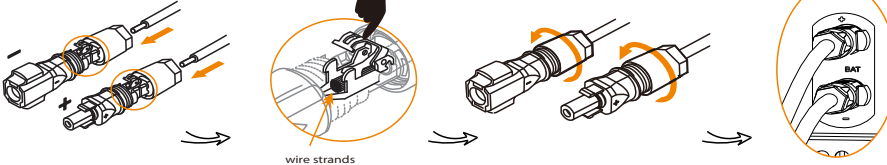
V

Battery Connection and Overview

Note:
If you use the lead-acid battery, please refer to corresponding quick installation manual.

A: Power Connection Steps:

Press down spring until it clicks audibly into place
The cable size is 10AWG(5~6mm²). Torque: $2.0 \pm 0.2 \text{ Nm}$



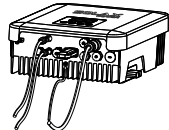
The fine wire strands must be seen in the chamfer

➤ Overview for connection.

- After checking all connections is correct, turn on the external battery switch.

- Turn on the grid switch.

- Press the "Enter" key for five seconds to open the switch. The LED will be green and the screen will display the main interface.



VI

Start Guide

1 == English ==
>English
Deutsch
- Select the language according to the need.

2 == Date time ==
>2018< -07-07
00:00
- Set date time based on the local time.

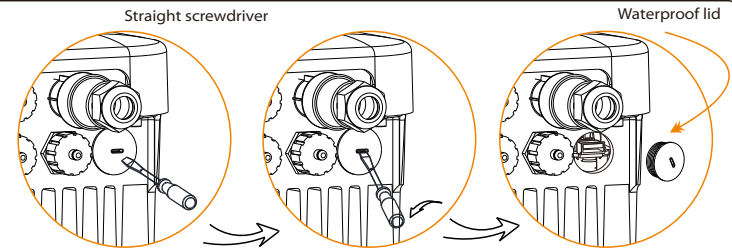
3 == Safety ==
Country
>G98
- The user can set the safety standard here according to different countries and grid tied standards.

4 == Export Control ==
User Value:
0000 W
- This function allows the inverter able to control energy exported to the grid.
- The user value setting by installer must be less than the factory value.

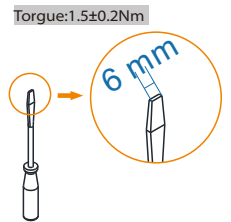
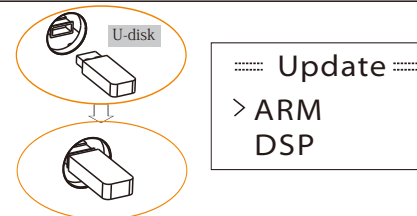
5 == Work Mode ==
Mode Select:
>Self Use<
- There are 4 work modes for choice, self use, back up mode, feed in priority and force time use.
- Please refer to the Page 43 of the user manual.

Firmware Upgrading

1) Make sure the battery switch and the AC switch is disconnected with grid. Unscrew the waterproof lid of Upgrade port by straight screwdriver as the picture shows.



2) Insert U-disk with **upgrade package*** into the USB port on the bottom of the inverter. Then turn on AC switch the battery switch, the LCD will show picture as below.



3) Press "OK" to confirm to update. After the upgrade is complete, please remember to turn off the battery switch and the AC switch, then pull off the U-disk, screw the waterproof lid.

* Please contact our service support to get the update package, and extract it into your U-disk. Do not modify the program file name! Or it may cause the inverter not work anymore!